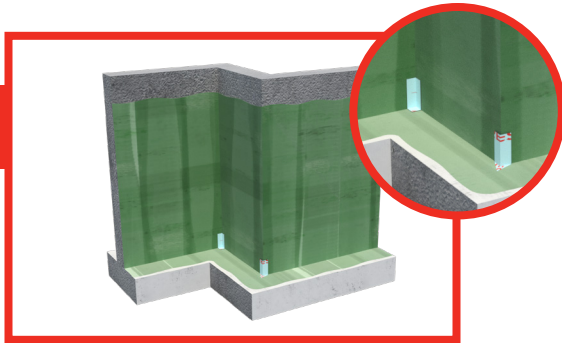


INSTALLATION GUIDE FOR BELOW-GRADE WATERPROOFING

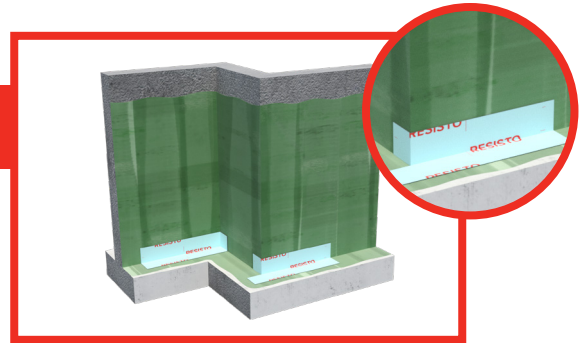
INSTALLATION RECOMMENDED BY RESISTO

1



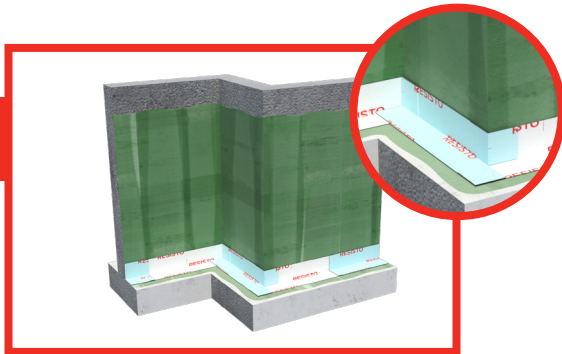
Start by protecting all interior and exterior corners. Note that PRIMER IS ALWAYS REQUIRED on concrete, blocks, and wood.

2



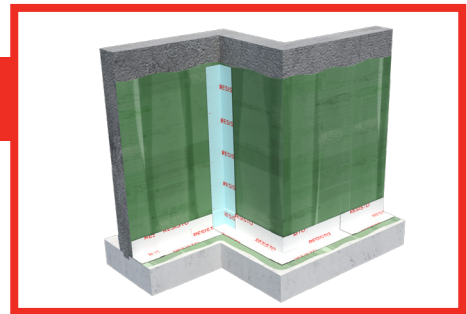
Install 12 in (30 cm) reinforcements at the bottom of the foundation. Use a membrane roller to ensure good adhesion of the membranes.

3



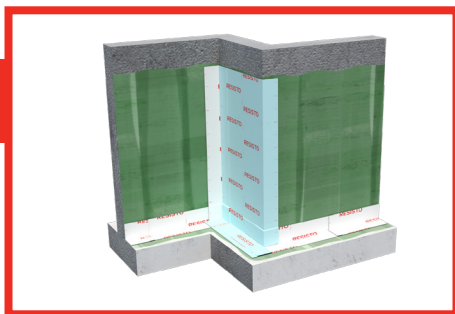
Apply reinforcement strips of 12 in (30 cm) at 6 in (15 cm) on the wall and 6 in (15 cm) on the footing over the entire foundation.

4



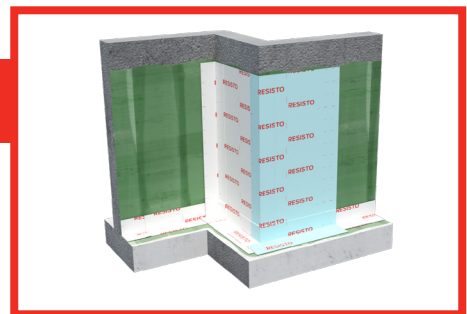
Install a 12 in (30 cm) membrane strip on each inside corner.

5



Allow a minimum overlap of 3 in (7.6 cm) between each membrane strip.

6

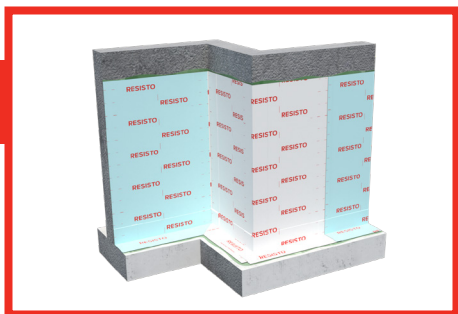


All exterior corners must be protected with two layers of membrane.

RESISTO®

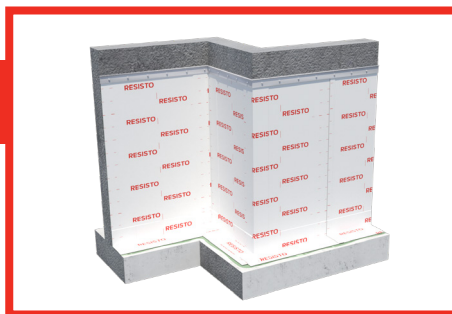
Please contact your dealer directly or go to www.resisto.ca for more information about this product.

7



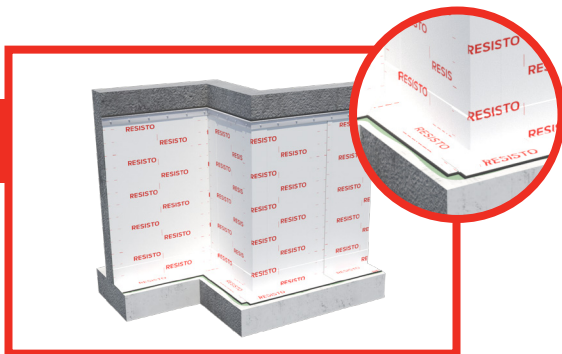
Install the full pieces of membrane, and make sure that they completely cover the joints and the ends of the reinforcement pieces.

8



It is recommended to mechanically fasten the top termination of the membrane with a termination bar.

9



Finish by adding a bead of elastomeric sealant to the top and bottom of the membrane.

10



It is recommended to install a protective panel, such as SOPRA-XPS, if the soil contains clay, or to protect the membrane during backfilling.

RESISTO®

Please contact your dealer directly or go to www.resisto.us for more information about this product.